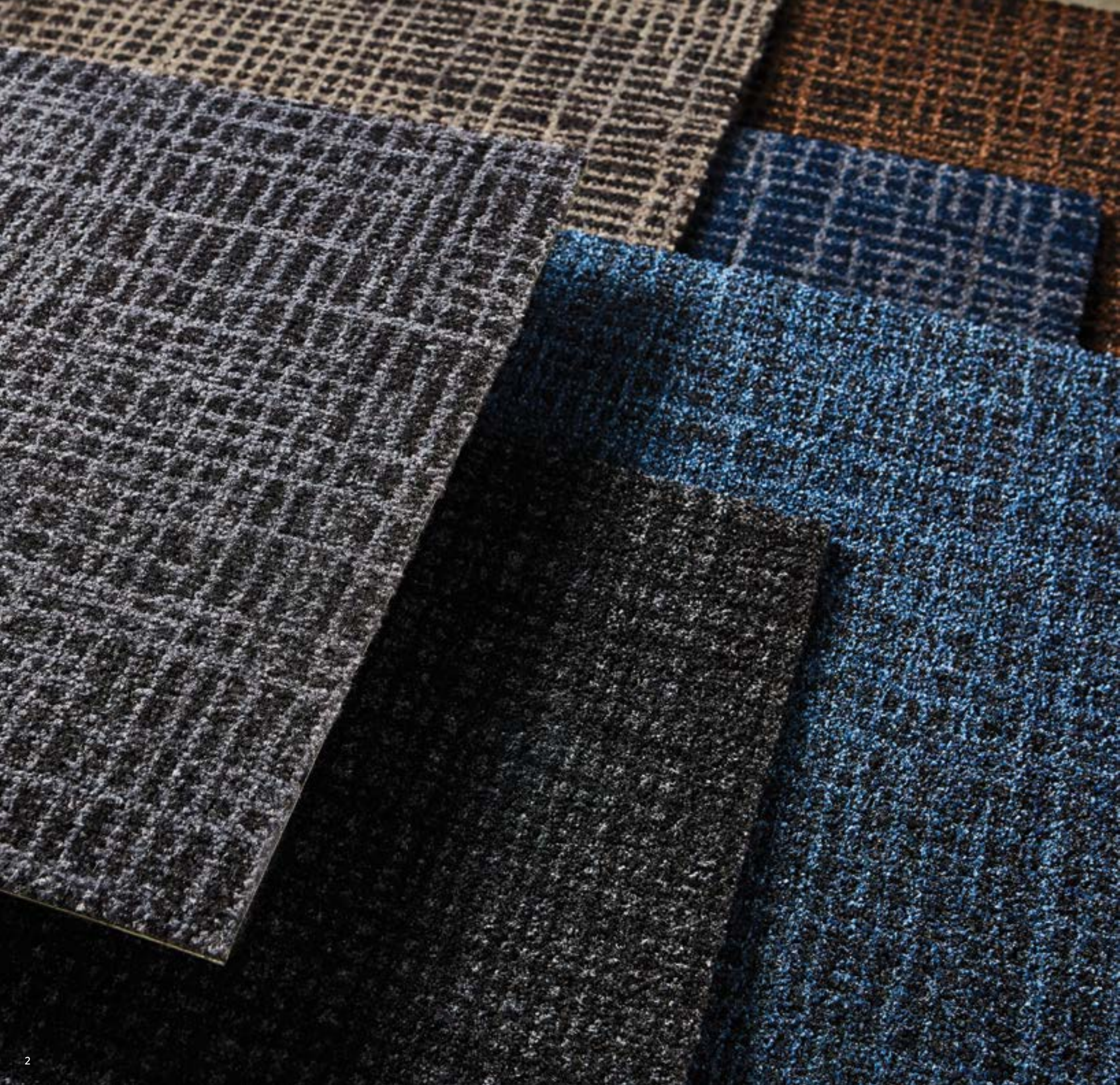


OBEX™

Milliken
Entrance Flooring

TILE

Milliken.

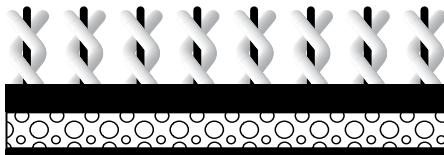


OBEX™ Tile

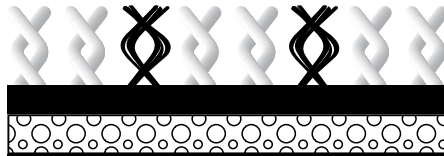
With cut-pile and loop-pile material construction options in multiple patterns and colors, OBEX™ Tiles offer high-performance dirt and moisture collection plus tailored design. All Tiles feature our industry-exclusive cushion backing designed to deliver underfoot comfort, improved acoustics, and moisture management. Tiles are easy to clean, and can be installed like carpet tile or surface mounted on floor.

ZONE 2 | ZONE 3

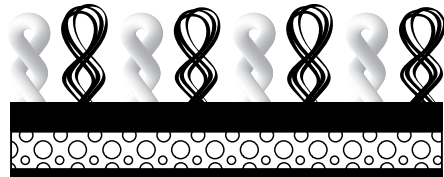
MATERIALS



Cut (Z2, Z3)



CutX (Z2, Z3)



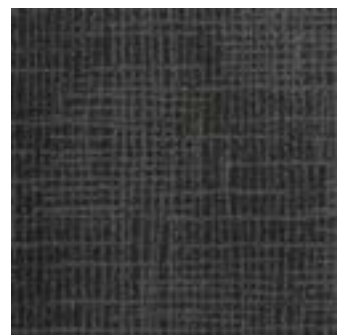
Loop (Z3)



Z1: Grid / Vinyl / Open
 Z3: Tile / Cut / Cross / Grey

Surface-mounted installation with traction back and standard edge guard.

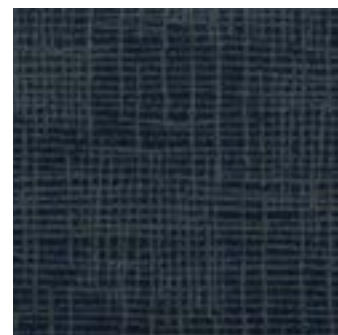
OBEX™ Cut | Cross | Z2, Z3



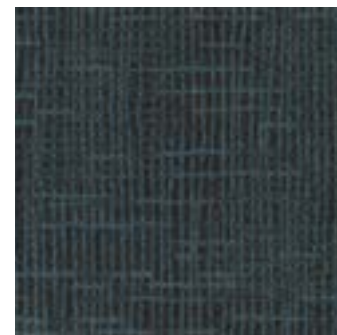
Dark Grey



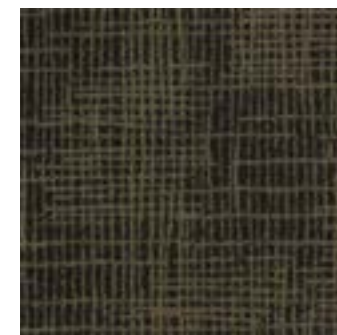
Grey



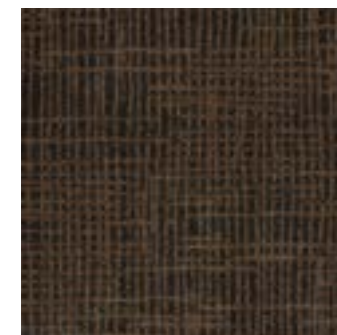
Dark Blue



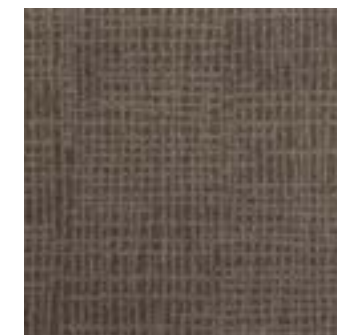
Blue



Dark Green



Brown



Mocha



Gold



- ▶ Z1: Grid / Mono / Open
- ▶ Z2: Grid (Border) / Vinyl / Closed
- ▶ Z2: Grid / CutX / Closed / Grey
- ▶ Z3: Tile / Cut / Drift / Grey

OBEX™ Cut | Drift Z2, Z3



Dark Grey



Grey



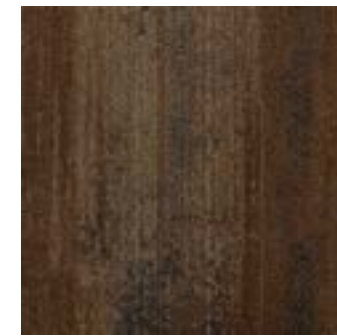
Dark Blue



Blue



Dark Green



Brown



Mocha



Gold

OBEX™ Cut | Fizz | Z2, Z3



Dark Grey



Grey



Dark Blue



Blue



Dark Green



Brown



Mocha



Gold





▶ Z3: Tile / Cut / Strum / Blue

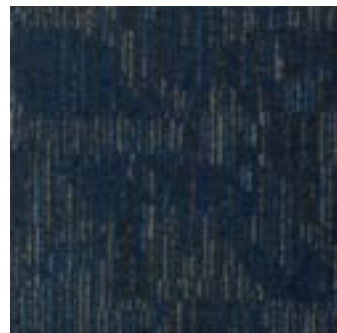
OBEX™ Cut | Strum | Z2, Z3



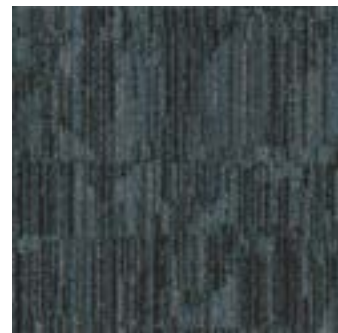
Dark Grey



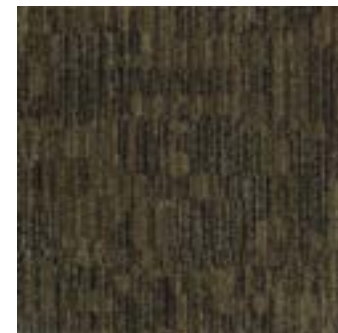
Grey



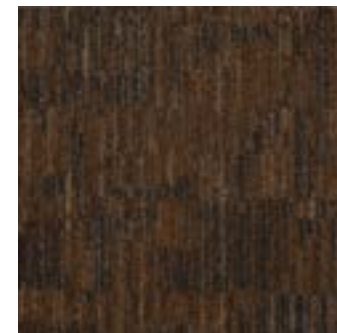
Dark Blue



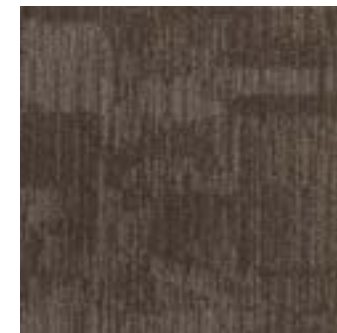
Blue



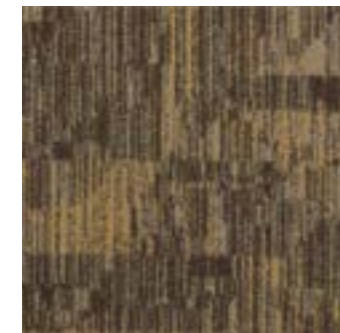
Dark Green



Brown



Mocha



Gold



▶ Z3: Tile / Cut / Thread / Mocha

OBEX™ Cut | Thread | Z2, Z3



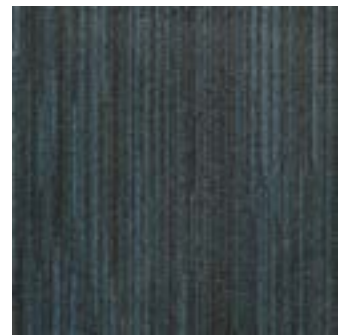
Dark Grey



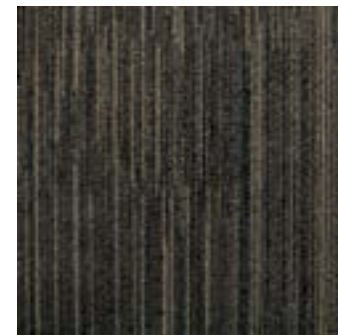
Grey



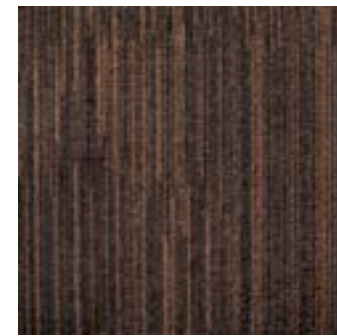
Dark Blue



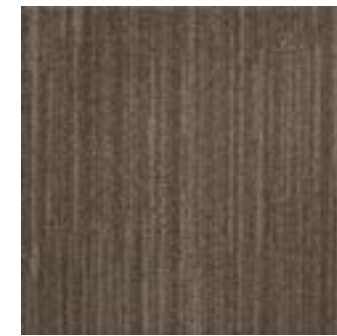
Blue



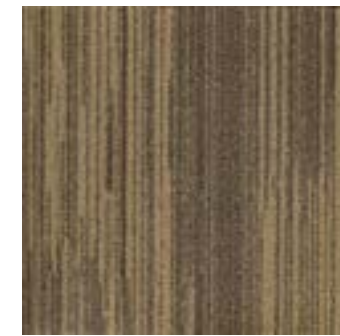
Dark Green



Brown



Mocha



Gold



▶ Z3: Tile / CutX / Drift / Dark Blue

OBEX™ CutX | Drift | Z2, Z3



Dark Grey



Grey



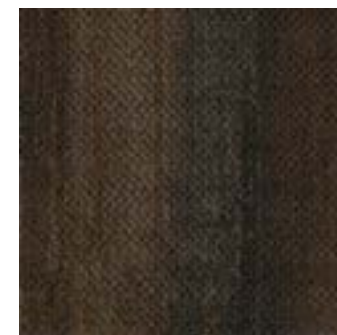
Dark Blue



Blue



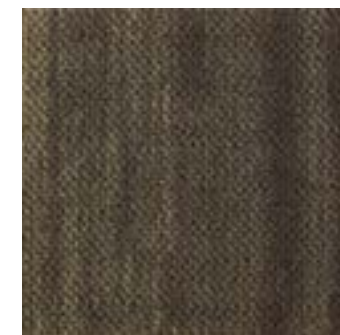
Dark Green



Brown



Mocha

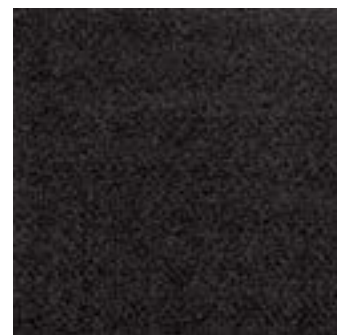


Gold

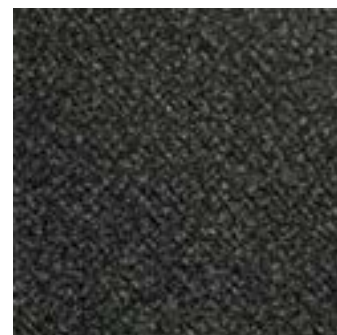


▶ Z1: Grid / Vinyl / Open
 ▶ Z3: Tile / CutX / Fizz / Dark Grey
 ▶ Z3: Tile / Cut / Fizz / Blue

OBEX™ CutX | Fizz | Z2, Z3



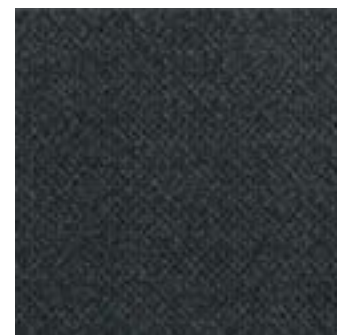
Dark Grey



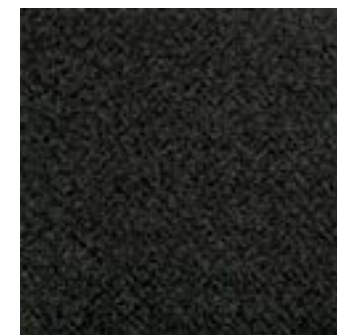
Grey



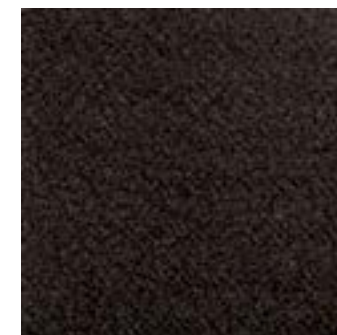
Dark Blue



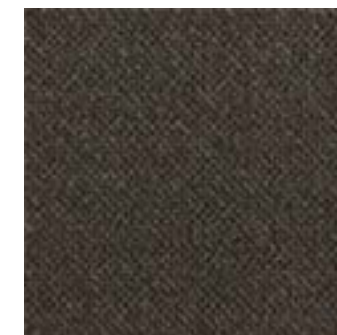
Blue



Dark Green



Brown



Mocha



Gold



▶ Z2: Bar / Cut / Dark Grey
 ▶ Z3: Tile / CutX / Thread / Brown

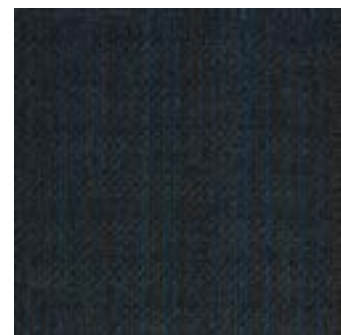
OBEX™ CutX | Thread | Z2, Z3



Dark Grey



Grey



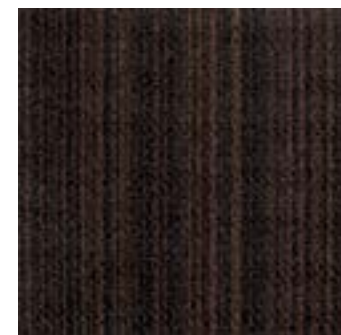
Dark Blue



Blue



Dark Green



Brown



Mocha

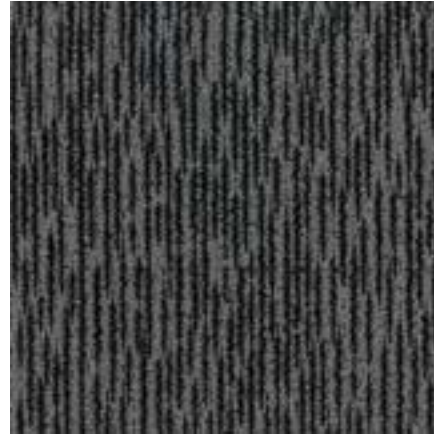


Gold

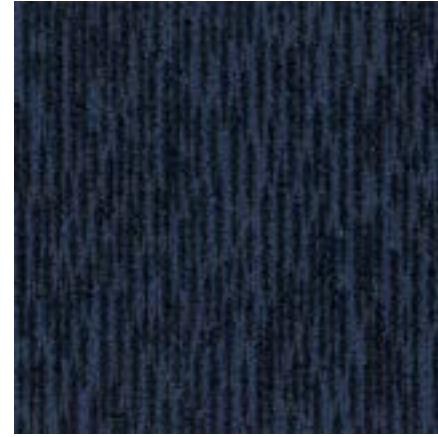
OBEX™ Loop | Bark | Z3



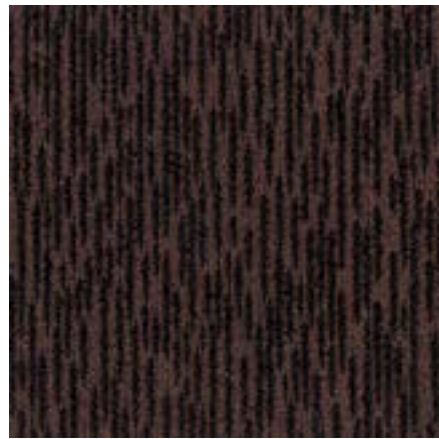
Dark Grey



Grey



Dark Blue



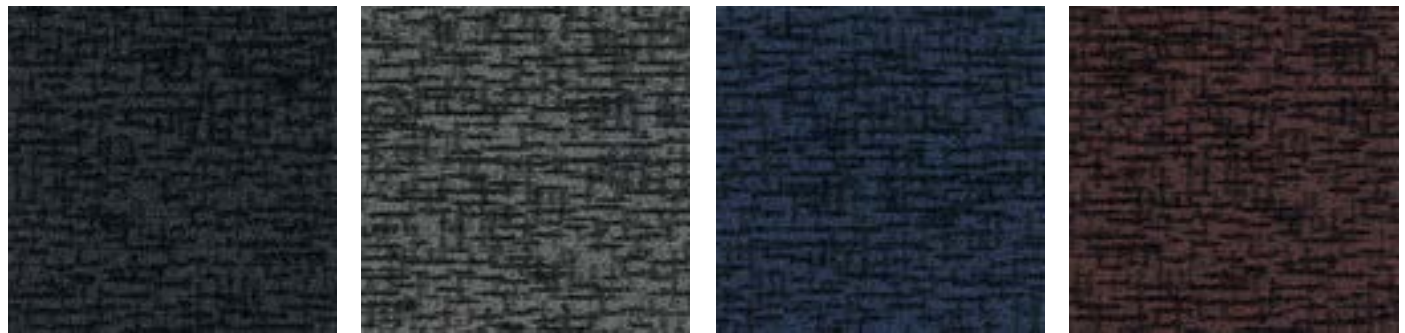
Brown





Z3: Tile / Loop / Stack / Dark Blue

OBEX™ Loop | Stack | Z3



Dark Grey Grey Dark Blue Brown



- Z1: Grid / Vinyl / Open
- Z2: Grid / Vinyl / Closed
- Z3: Tile / CutX/ Drift / Mocha
- Z3: Tile / Cut/ Drift / Gold

Covering the Zones

Protection from the Outside In

To determine the most effective OBEX™ solution, our team evaluates your building's entry based on three distinct Zones. This process starts at the outside of the building, and addresses the entire pathway through any airlocks, vestibules, and lobby or reception areas. Because every facility is unique, breaking down these Zones helps define where entrance flooring should be installed, as well as what combinations of Forms and Materials will deliver the best protection and performance.

ZONE 1 | OUTDOORS

Location: Outdoor covered area prior to building's entrance

Recommendation: Product with heavy scraping action

Goal: Trap grit, heavy dirt particles, and moisture, including snow, salt, and sand

ZONE 2 | VESTIBULE / AIRLOCK

Location: Enclosed entrance of building

Recommendation: Dual-action product that combines scraping and absorption

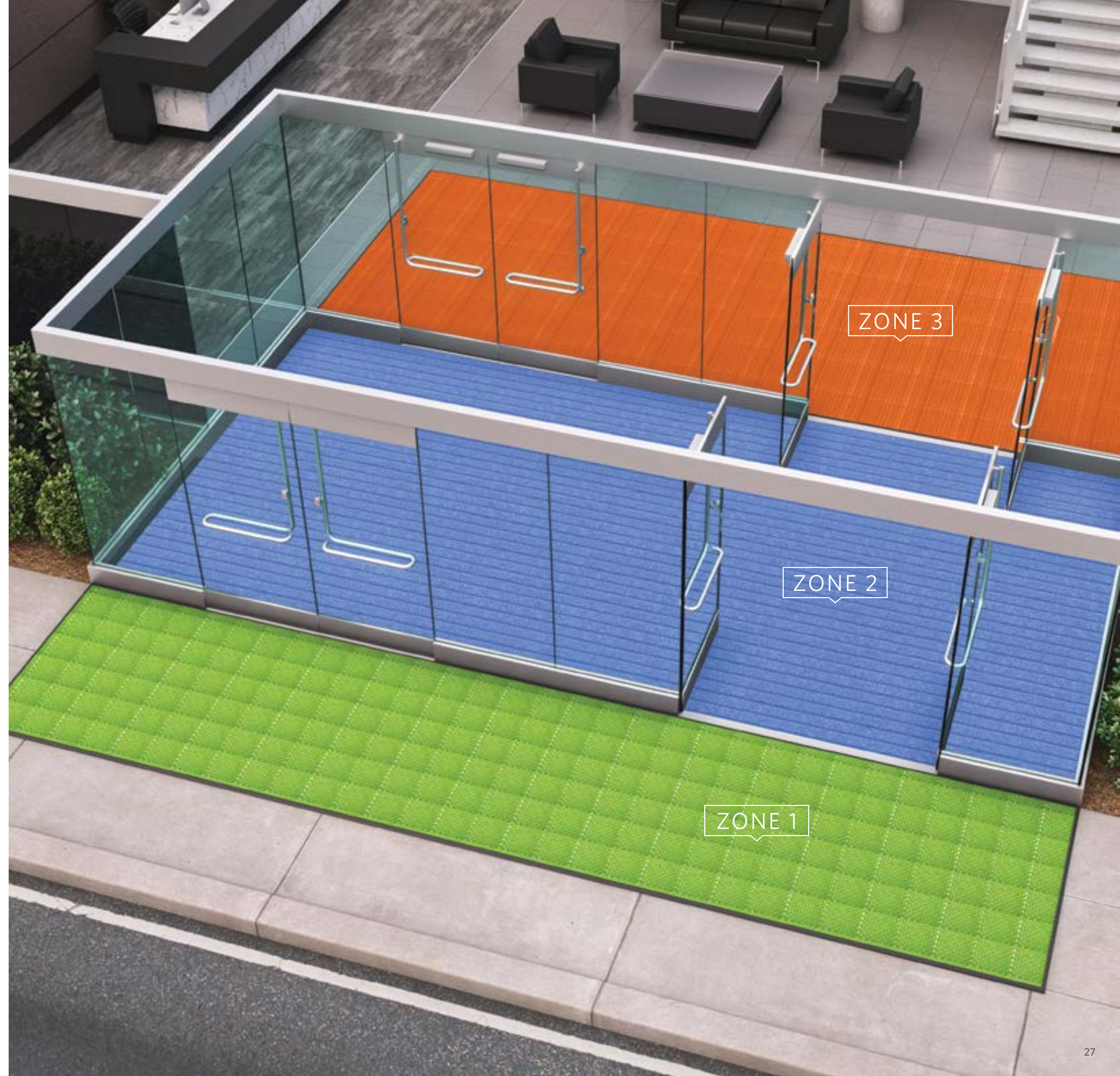
Goal: Collect dirt, debris, and moisture

ZONE 3 | INDOORS

Location: Primary area(s) inside building

Recommendation: Product with high absorption qualities

Goal: Remove remaining moisture and small particles





Introducing **OBEX VIA**TM

Our **Variable Installation Approach (VIA)** means you don't have to settle for generic, one-size-fits-all entrance flooring.

OBEXTM VIA is our site-specific analysis that starts with an assessment of your facility's unique environment, specific needs, and challenges.

We then match your requirements with our offering of effective Forms and industry-proven Materials.

Finally, VIA focuses the conversation on your preferences, resulting in a tailored entrance flooring system that delivers both performance and protection.

O

Objective - What do you need your entry to do?

Factor in variables such as weather conditions and the intensity of foot, rolled, and heavy cart traffic.

B

Barrier Level - Where and to what degree do you need protection?

Assess each Zone along the entry pathway, including vestibules, lobbies, and transition areas to determine available linear walk-off distance.

E

Enhance - What look and style do you want?

Review options for color and pattern, as well as coordination with interior flooring products and any identity branding you may want.

X

Execute

Based on your answers to the previous questions, we can now identify and recommend the most effective, customized system of OBEXTM Forms and Materials.

Tile Specifications

OBEX™ CUT

Construction
Tufted, Cut Pile

Tile Size
19.7" x 19.7" (50 cm x 50 cm)

Textile Yarn Type
Milliken-Certified WearOn® Nylon and Monofilament Type 6 and 6,6

Tufted Face Weight
28 oz/yd² (949 g/m²)

Pile Height
0.18" (4.62 mm)

Nominal Thickness
0.50" (12.7 mm)

Average Density
5,281

Standard Backing
PVC-Free WellBAC™
Comfort Plus Cushion
(Available with TractionBack®)

OBEX™ CUTX

Construction
Tufted, Cut Pile

Tile Size
19.7" x 19.7" (50 cm x 50 cm)

Textile Yarn Type
Milliken-Certified WearOn® Nylon and Monofilament Type 6 and 6,6

Tufted Face Weight
26 oz/yd² (814 g/m²)

Pile Height
0.17" (4.72 mm)

Nominal Thickness
0.50" (12.7 mm)

Average Density
4,684

Standard Backing
PVC-Free WellBAC™
Comfort Plus Cushion
(Available with TractionBack®)

OBEX™ LOOP

Construction
Tufted, Multi-Level Loop

Tile Size
19.7" x 19.7" (50 cm x 50 cm)

Textile Yarn Type
ECONYL® Solution-Dyed Nylon Type 6 Solution-Dyed Nylon Monofilament

Tufted Face Weight
28 oz/yd² (946 g/m²)

Pile Height
0.26" (6.475 mm)

Nominal Thickness
0.39" (9.9 mm)

Average Density
5,740

Standard Backing
PVC-Free WellBAC™
Comfort Cushion
(Available with TractionBack®)



This product has a UL® Environment 3rd party verified Environmental Product Declaration (EPD).
A copy of the EPD is available online at millikencarpet.com/epd and productguide.ulenvironment.com.

Quick Reference Guide

Form - Material	Zone Application			Dirt/Debris Removal			Moisture Absorption			Installation Approach		
	Z1	Z2	Z3	Good	Better	Best	Good	Better	Best	Recessed	Surface	Wall to Wall
Bar - Mono	•	•			•		•			•	•	•
Bar - Cut		•				•		•		•	•	•
Grid - Vinyl Open 11 mm	•	•		•			•			•	•	•
Grid - Vinyl Closed 11 mm		•		•			•			•	•	•
Grid - Mono Open 11 mm	•	•			•		•			•	•	•
Grid - Mono Closed 11 mm		•			•		•			•	•	•
Grid - CutX Open 11 mm		•				•		•		•	•	•
Grid - CutX Closed 11 mm		•				•		•		•	•	•
Tile - Cut		•	•		•				•	•	•	•
Tile - CutX		•	•			•		•		•	•	•
Tile - Loop			•	•				•		•	•	•
Roll - Mono	•	•			•		•			•	•	•
Roll - Cut		•	•		•		•	•	•	•	•	•
Roll - CutX		•	•			•		•		•	•	•
Roll - Loop	•	•	•	•			•	•	•	•	•	•
Mat - Mono	•				•		•				•	
Mat - Cut			•		•				•		•	
Mat - CutX			•			•		•			•	

Milliken's integrated OBEX™ system of Forms and Materials optimizes safety, wellness, and design from the outside in.

